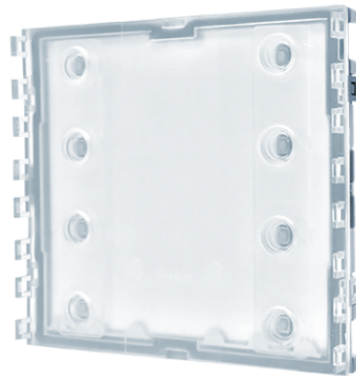


UT9200**ULTRA****ULTRA CALL BUTTON MODULE**

Call button module for Ultra entrance panel, compatible with all systems. Designed for 8 call buttons in professional-grade plastic given an anti-yellowing and anti-dulling treatment or in aluminium. To be finished with 4 single buttons (4 calls), 4 double buttons (8 calls) or with caps. Automatic nameplate backlight switch-off during daytime hours via the twilight sensor for the paired audio or audio/video module. White nameplate lighting. Dimensions: 1 Ultra module. Dimensions: 100x90x35mm

AWARDSDESIGN
MILANO

UT9200

ULTRA

ULTRA CALL BUTTON MODULE

GENERAL DATA

Type	Modular
Height (mm)	90
Width (mm)	100
Depth (mm)	35
Product color	Transparent
Flush-mounted	Yes, with a dedicated accessory
Wall-mounted	Yes, with a dedicated accessory

COMPATIBLE SYSTEMS

Audio/video Simplebus 2 with power supply art. 4888C	Yes
Audio/video Simplebus 2 with power supply art. 1210/1210A	Yes
Audio Simplebus 2 with power supply art. 1210/1210A	Yes
Audio/video Simplebus 1	Yes
Audio Simplebus 1	Yes
ViP	Yes

ELECTRICAL CHARACTERISTICS

Type of power supply	Power supply from video door entry bus
Supply voltage	33VDC
Absorption in stand-by (W)	0.4
Maximum absorption (W)	0.4

HARDWARE FEATURES

Call type	Push-buttons
Type of buttons	Mechanical
Number of push-buttons (n°)	8
Backlight colour	White, Off

UT9200

ULTRA

ULTRA CALL BUTTON MODULE

SETTINGS

Backlight brightness	Yes
----------------------	-----

ENVIRONMENTAL AND COMPLIANCE FEATURES

Operating temperature (°C)	-25 ÷ 55
----------------------------	----------

Operating humidity (RH max) (%)	25 ÷ 95
---------------------------------	---------

Environmental class	IV
---------------------	----

CE certifications	RoHS II - 2011/65/UE (EN 50581:2012), EMC 2014/30/UE (EN 61000-6-1:2007 , EN 61000-6-3:2007+A1:2011)
-------------------	--